



FRAMEWORK **22**

We built the Framework.
You build the home.

Welcome to Framework22, one of Prince George's newest housing developments. With a combination of style, livability and convenience, Framework 22 is the perfect place for you to call home.



HAYER
CONSTRUCTION



Building One Releasing Now

Framework 22 is a mixed-use housing development consisting of townhouses and condos.

Building One of Framework 22 features five 3-bedroom townhouses. These 3 bed, 3 1/2 bath luxury units provide a rare combination of both style and livability. Each unit is two stories with a double garage and basement flex room.

Prices are starting at \$419,000. Reserve yours now.

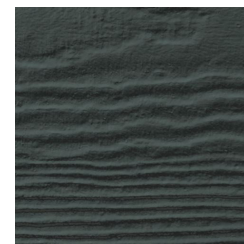




Exterior Finishes



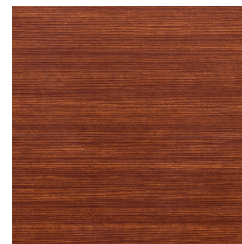
**CULTURED STONE
BRICK**
COLOUR: WHITE HANDMADE BRICK



**HARDIE PANEL
GENERAL SIDING
FIRST & THIRD TOWNHOUSES**
COLOUR: IRON GRAY



**HARDIE PANEL
GENERAL SIDING
SECOND TOWNHOUSE**
COLOUR: GRAY SLATE



**LUX ARCHITECTURAL PANEL
ACCENT**
COLOUR: DARK ASH



**HARDIE PANEL
ACCENT**
COLOUR: ARCTIC WHITE



**CAMBRIDGE LT SHINGLES
ROOF**
COLOUR: HARVARD SLATE

FRAME ONE PACKAGE

— light —



WOOD VINYL
PLANK



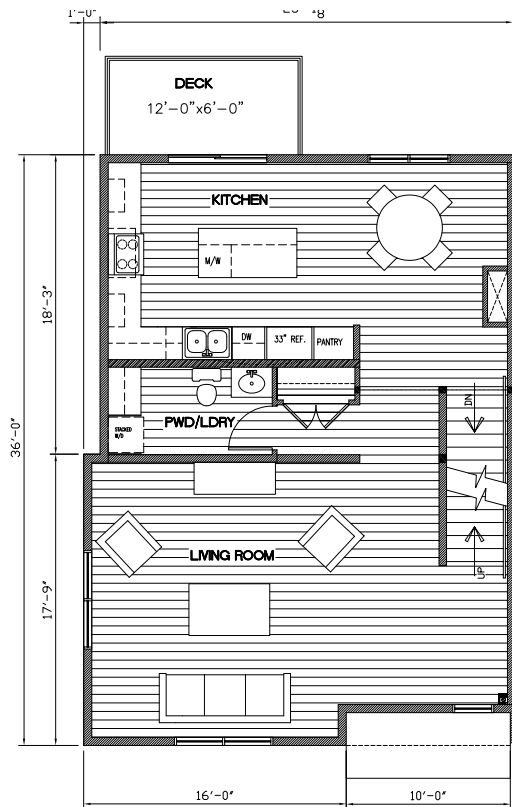
TILE



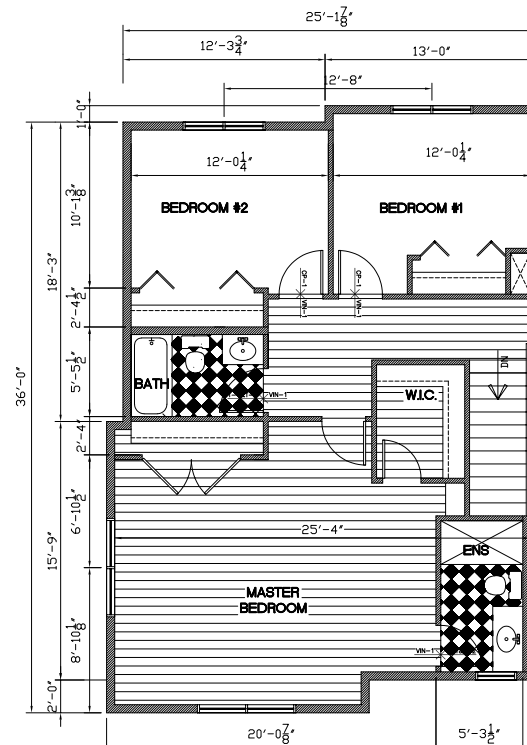
CARPET



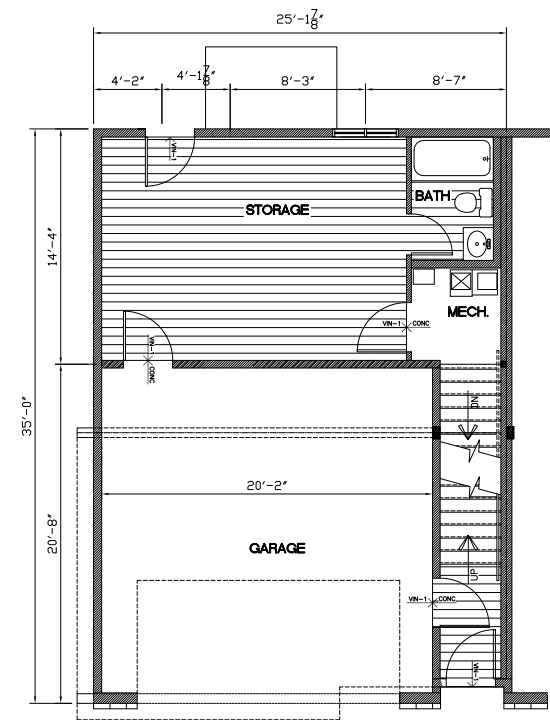
CONCRETE



Main Floor



Second Floor



Basement

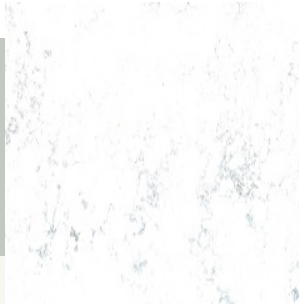
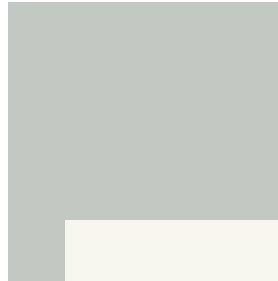
FRAME ONE PACKAGE

— light —



*KITCHEN OPEN SHELVES:
WHITE OAK WOOD*

*CABINET COLOUR:
SILVER MARLIN*



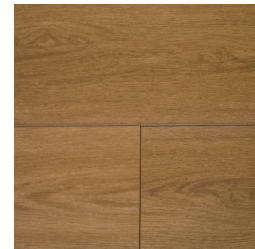
C-TOP: TCE STONE 4024



CABINET DOOR STYLE



BEDROOM CARPET

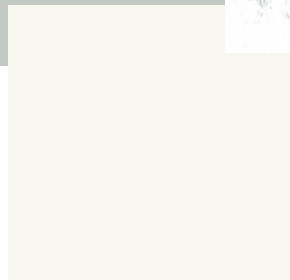


WOOD VINYL PLANK



BACKSPLASH & WALL TILE

*CABINET COLOUR:
SIMPLY WHITE*



CABINET HARDWARE



CABINET HARDWARE



BATHROOM FLOOR TILE

FRAME ONE PACKAGE

— light —



ABOVE OPEN SHELVES IN
KITCHEN



KITCHEN EATING NOOK



SURFACE MOUNTS



BATHROOM LIGHT



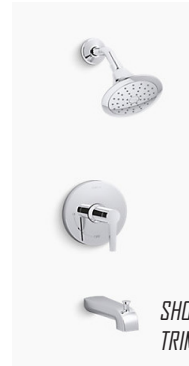
ENSUITE LIGHT



KITCHEN PULL DOWN
FAUCET



WALK IN CLOSET LIGHT



SHOWER & TUB
TRIM



BATHROOM SINK



KITCHEN DOUBLE SINK



BATHTUB



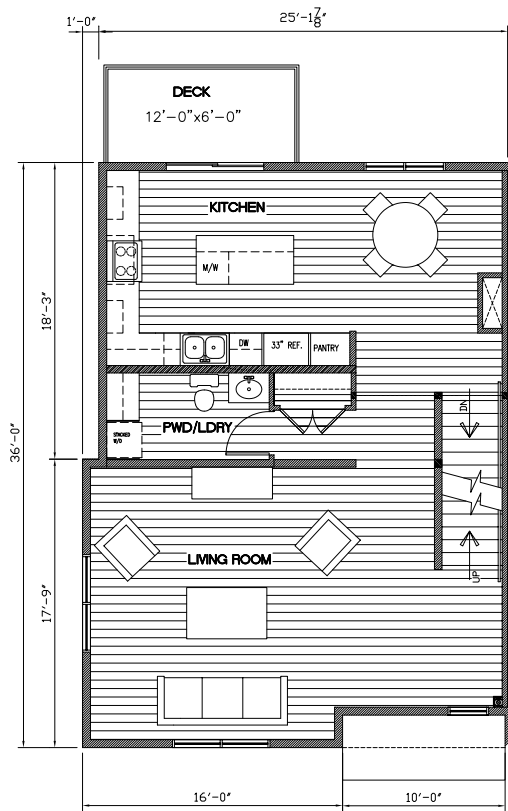
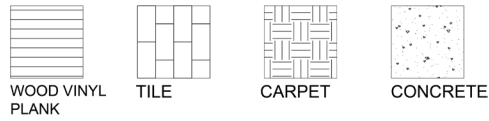
BATHROOM FAUCET



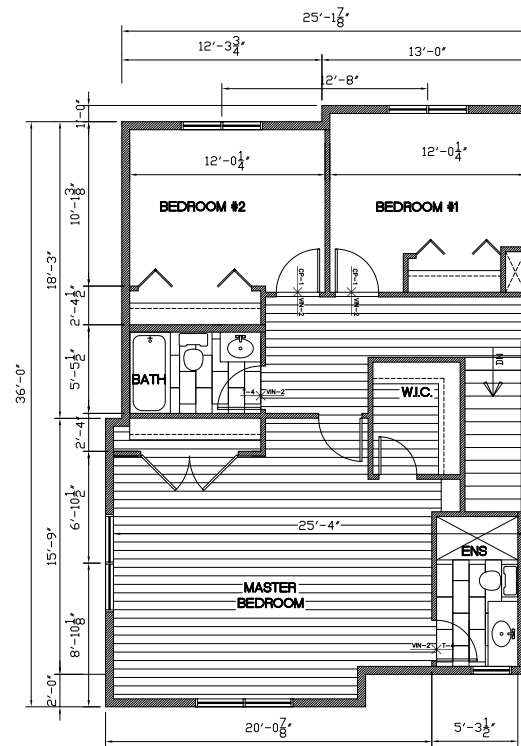


FRAME TWO PACKAGE

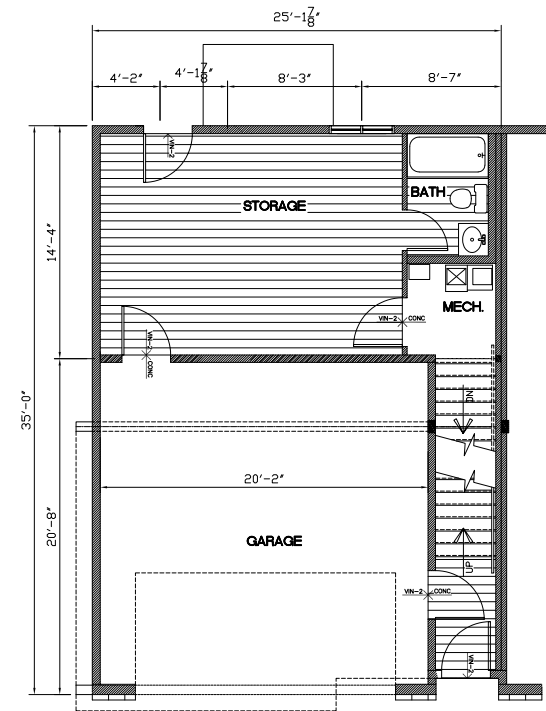
— dark —



Main Floor



Second Floor



Basement

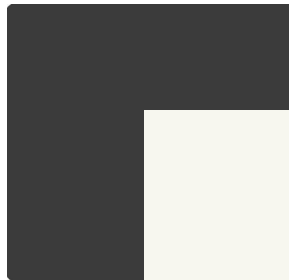
FRAME TWO PACKAGE

— dark —



KITCHEN OPEN SHELVES:
WHITE OAK WOOD

CABINET COLOUR:
OBSIDIAN



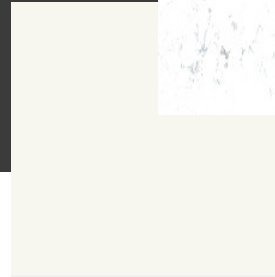
C-TOP: TCE STONE 4024



CABINET DOOR STYLE



BEDROOM CARPET



CABINET COLOUR:
SIMPLY WHITE



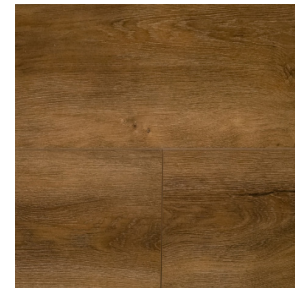
BACKSPLASH



CABINET HARDWARE



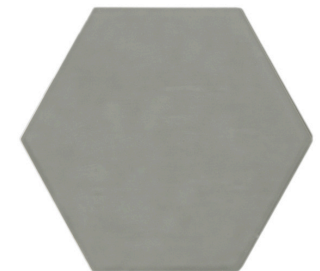
CABINET HARDWARE



WOOD VINYL PLANK



BATHROOM FLOOR TILE



BATHROOM WALL TILE

FRAME TWO PACKAGE

— dark —



*ABOVE OPEN SHELVES IN
KITCHEN*



KITCHEN EATING NOOK



SURFACE MOUNTS



BATHROOM LIGHT



ENSUITE LIGHT



*KITCHEN PULL DOWN
FAUCET*



WALK IN CLOSET LIGHT



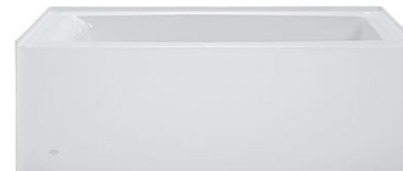
*SHOWER & TUB
TRIM*



BATHROOM SINK



KITCHEN DOUBLE SINK



BATHTUB

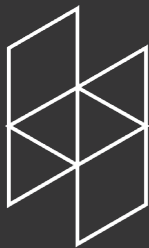


BATHROOM FAUCET

FRAMEWORK **22**

Site location:
4278 22nd Avenue
Prince George, BC

framework22.com
info@framework22.com



HAYER
CONSTRUCTION